

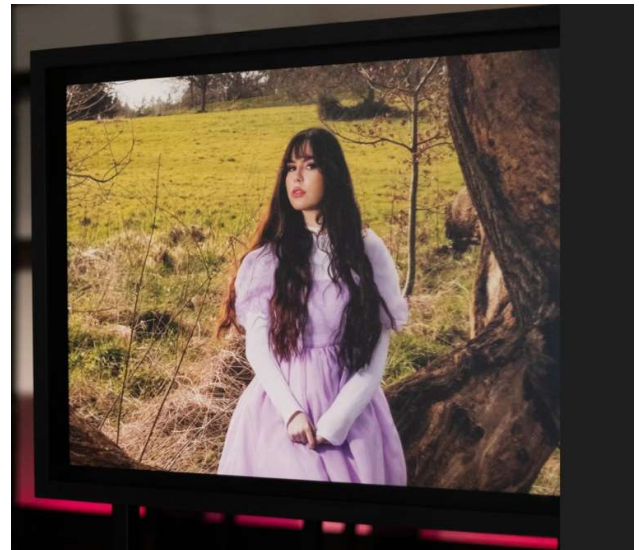
A Home at University

Care experienced and Estranged Students Exhibition

About

The Unite Foundation is celebrating 10 years of accommodation scholarships for care experienced and estranged students. We now know from [independent research](#) this support has resulted in statistically significant educational outcomes for our students compared to their peers.

Too few other students with this background go to university in the first instance, and too many drop out due to multiple challenges before benefitting from the transformational impact of higher education. Our free touring exhibition offers your location an opportunity to provoke conversations, engage others, challenge stigma, influence action or just celebrate care experienced and estranged students – past, present or future.



Content

The exhibition tour theme is '**a home at university for care experienced and estranged students**'. Each location can make this theme their own and so events or activities might focus on the Unite Foundation scholarship, furthering your development plans for widening accommodation support, fostering the feeling of *being* at home at uni, social connection for existing students or any other content that fits the theme.

The exhibition can be in your chosen location from one day to a maximum of 2 weeks. You can use it for multiple different events around the central theme, being sure to maximise your outcomes from the event and proactive support of student wellbeing throughout. We want to see students/graduates leading their own narrative, so we'll expect young people with lived experience of the care system or family estrangement to be actively involved in creating and shaping your event. The Unite Foundation will happily broker introductions between student groups, student unions, universities, guilds, associations and other sector stakeholder or charities to help you make the most of the opportunity.

Funding

The Unite Foundation will cover the costs of delivery, set up and take down of the exhibition. A budget of up to £250 per location is also available to meet additional costs identified and applied for in advance – eg light catering, student ambassadors, wellbeing components. Once agreed, these costs can be invoiced for by the venue or hosting organisation.

Exhibition Details

The complete exhibition is comprised of 17 double sided stands. The widths for each stand is portrait 650mm and landscape 1540mm. It is of course possible to curate a smaller exhibition for smaller venues by reducing the number of stands 'ordered'.

Count	Content Description	Orientation	Double sided
6	Photographic images with captions	Portrait	Image one side, caption on other
6	Photographic images with captions	Landscape	Image one side, caption on other
1	Exhibition explainer	Portrait	Same content repeated both sides
1	About Unite Foundation	Portrait	Same content repeated both sides
1	About Student-Led Community	Landscape	Description one side, flag on reverse
1	Definition of care experienced	Landscape	Same content repeated both sides
1	Definition of estranged	Landscape	Same content repeated both sides

- + Supporting merchandise available includes:
 - o Postcards about the student led community
 - o "This is for Everyone" books celebrating 10 years of the Unite Foundation
 - o Postcards summarising research on impact of accommodation scholarships
- + The opportunity to invite featured students, including Dannii the exhibition photographer, and Unite Foundation team members
- + Advertising support through This is Us student-led community platform and social channels.

An overview of the [photographic imagery and copy can be viewed here](#).

Venue, Vans & Media

The stands need to be spaced a minimum of 1 metre apart for health and safety reasons and work best when enabling an audience to circulate around and between them. They are lightweight and simple to move around. Your venue should be safe and secure for attendees and the display itself, which is not waterproof! The venue must be accessible for 2 hours either side of your event or activity to enable the 3rd party logistics team to set up and break down the show. Please think about availability of van parking for the same time period. Whilst generating interest over social or local media is encouraged to support your activity, simply contact the Unite Foundation for any high resolution images and appropriate credits rather than reproducing from the exhibition itself.

Creative

The imagery in the exhibition was commissioned from photography scholarship student (now graduate) of the University of the West of England, Dannii Jones. It's of 12 students from across the UK who have received the Unite Foundation scholarship. We asked Dannii to apply her distinctive style to the theme of **Home**; the thread that runs through all of our work. Dannii used these striking and evocative images to form part of her final year project. You can check out her other projects and commercial photography services at <https://dannijphotography.cargo.site>.

How to Book

Book your event for dates 1st October 2022 onwards via our [online booking form](#) and share information on:

- + Intended dates of event/s
- + How the exhibition theme will be met
- + Intended outcomes from activity
- + Target numbers of participants
- + How student wellbeing will be promoted throughout and afterwards
- + Address of event space (and van parking)
- + Name & contact details of main person to liaise with on logistics

To discuss your event or 'pencil' dates on the [exhibition calendar](#) do please get in touch with us on info@unitefoundation.org.uk and we'll get right back to you.

